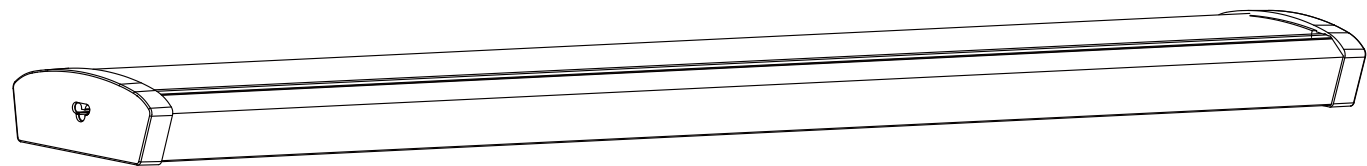


Linkable Wrap Installation Guide



⚠ WARNING

- To reduce the risk of death, personal injury or property damage from fire, electric shock, falling parts, cuts/abrasions, and other hazards read all warnings and instructions included with and on the fixture box and all fixture labels.
- Before installing, servicing, or performing routine maintenance upon this equipment, follow these general precautions.
- Commercial installation, service and maintenance of luminaires should be performed by a qualified licensed electrician.
- For the installation: If you are unsure about the installation or maintenance of the luminaires, consult a qualified licensed electrician and check your local electrical code.
- To prevent wiring damage or abrasion, do not expose wiring to edges of sheet metal or other sharp objects.
- Do not make or alter any open holes in an enclosure of wiring or electrical components during kit installation.

⚠ WARNING

- Turn off electrical power at fuse or circuit breaker box before wiring fixture to the power supply.
- Turn off the power when you perform any maintenance.
- Verify that supply voltage is correct by comparing it with the luminaire label information.
- All wiring connections should be capped with UL approved wire connectors.

⚠ CAUTION

- Avoid direct eye exposure to the light source while it is on.
- Account for small parts and destroy packing material, as these may be hazardous to children.
- Risk of burn. Disconnect power and allow fixture to cool before changing bulb or handing fixture.

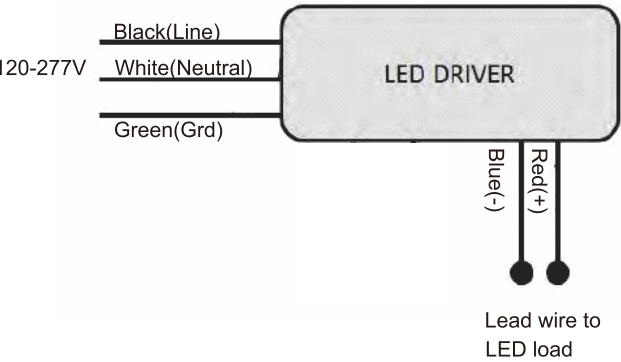
NOTICE: Green ground screw provided in proper location. Do not relocate.

NOTICE: Minimum 90° supply conductors.

NOTICE: Specifications and dimensions subject to change without notice.

NOTICE: Suitable for Dry or Damp location.

General Wiring Diagram



Warning:

All units must be individually connected to the AC Supply

Select appropriate access point for your installation, remove knockout, and feed power leads through hole. Connect the supply wire from the source to the driver.

Black = Line White = Neutral Green = Ground

****Consult with dimmer control manufacturer's wiring instructions.**

Operating Characteristic

Voltage input: 120-277V 50/60 Hz

Operating temp: -40°F (-40°C) to 122°F (50°C)

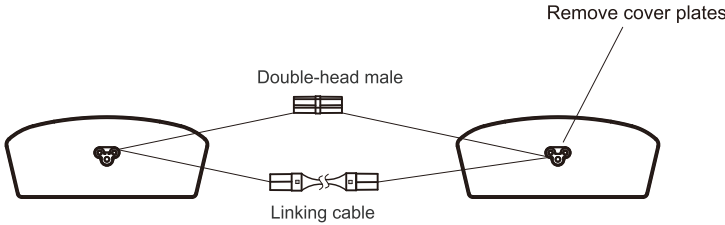
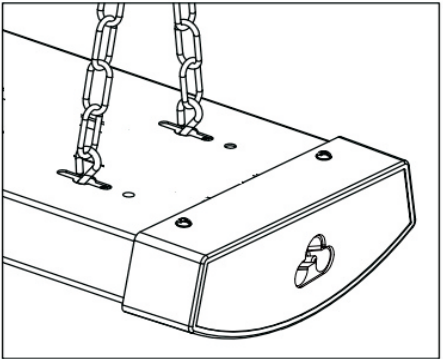
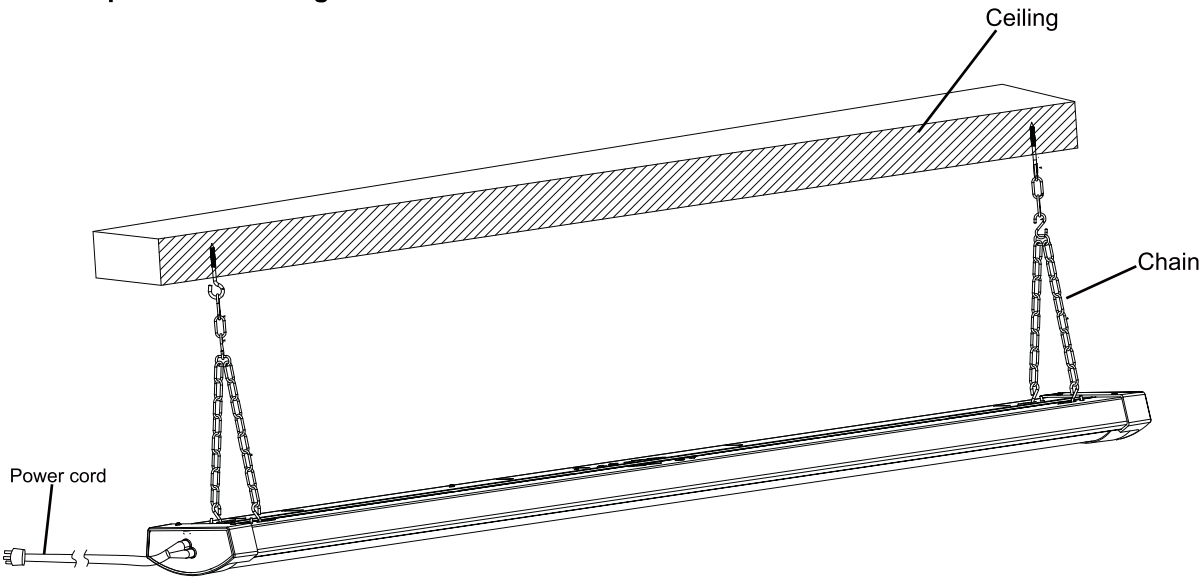
Linkable Wrap Installation Guide

Installation Step:

⚠ WARNING: Always turn off the power supply from main circuit breaker first!

NOTICE: Installation kits of Chain suspended mounting were not included.

A-Chain Suspended Mounting



Step1: Use the chains to hang the luminaires onto the ceiling.

Step2: Plug the power cord with the plug into the female connector of the only fixture that needs to be connected to the power supply.

Step3: Then use the provided dual-head male connectors to connect other required fixtures in series. The number of connected fixtures must not exceed 8 pieces.

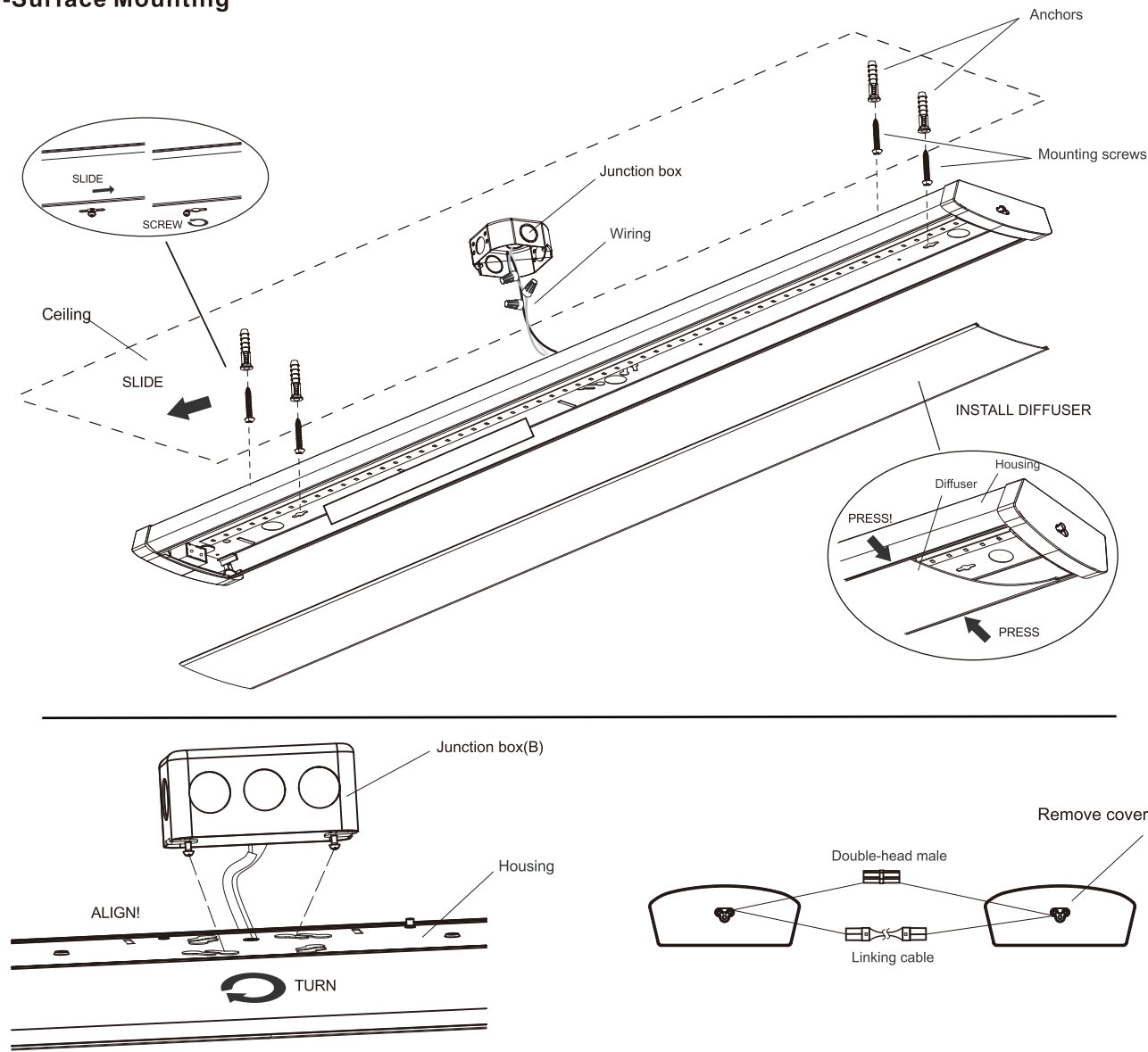
Step4: Turn on the luminaire.

Linkable Wrap Installation Guide

Installation Step:

⚠ WARNING: Always turn off the power supply from main circuit breaker first!

B-Surface Mounting



Step1: Remove the lens from the housing near one end of the housing by using the provided suction cup. Press the suction cup to absorb one side of the lens, Pull the suction cup to detach the lens from the luminaire housing.

Step2: Use a screwdriver to punch out one of the knocked holes and pass the electrical cable out from the housing.

Step3: Use the luminaire as a template by placing it on the junction box and penciling in the ceiling the four holes positions. Put the luminaire aside and drill the four holes. Insert an anchoring bolt (not included) into each hole.

Step4: Screw the four mounting into each anchoring bolt, slide the fixture until it locked in right place. Then connect the AC wires.

Step5: Install the lens starting at one end of housing. Insert lens slot onto edge of housing. Carefully squeeze the lens to engage opposite side with housing. Continue this action down length of lens until fully installed onto housing.

Step6: Remove the cover plates and connect the luminaires by double-end male connector or cable. The maximum quantity for daisy chain is 8 pieces.

Step7: Turn on the luminaire.